



DeviceMaestro® Smart™ Management Console 3.0

DeviceMaestro® Smart™ is an open, standards-based, scalable and flexible application that enables an organization to implement its M2M strategy, starting from basic device monitoring, to performing business analytics, implementing service management and eventually business transformation. OEMs and Service Providers can seamlessly integrate DeviceMaestro Smart, with their connected devices, applications and businesses, gain valuable business insights, drive better business outcomes and provide a richer, complete customer experience.

DeviceMaestro Smart Management Console is a component of DeviceMaestro Smart. It provides the web-based interface for the complete M2M application.

Complete M2M Application

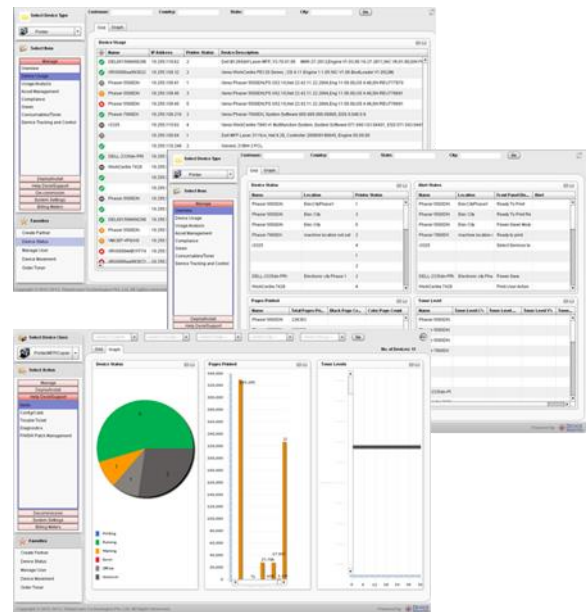
- Classifies assets by location, vendor, model
- Tracks assets through their life-cycle
- Provides remote provisioning, remote servicing, consumables ordering and remote fault management
- Allows creation and management of policies, and configuration of device parameters
- Enables manual/scheduled firmware repository management and upgrade
- User-friendly dashboards with reports, graphs for device parameters
- Displays vital information including device health, consumable status, billing meters, asset classification, fault status and more
- Monitors device status, consumable status, order supplies and other activities typically required for Managed Services
- Permits flexible customization of user- defined reports, dashboards and graphs by users (graph and dashboard axis, parameters and duration for reports, etc.)
- Provides Multi Document Interface (MDI) for users to position screens/forms

Client-Server Architecture

- Interfaces with DeviceMaestro Smart Server

Standards Compliant

- HTTP – a standard networking protocol for communication



Interoperable

- Manages any device compatible with the pre-defined and custom defined¹ device classes
- Integrates customer business systems, business logic, workflows¹

Multi-vendor Device Support²

- Manages different predefined and custom defined¹ device classes
- Manages multiple devices in a supported device class

Secure Environment

- HTTPS, encrypted SSL communication for data exchange with server
- Role-based, multi-user authentication
- User/role based access to customers/partners

Ready to Deploy

- Predefined menus, reports for predefined device classes
- Easy addition of menus, reports for new device classes¹
- Installation within premise or on the cloud
- Multi-tenant support for different customers/partners

Scalable

- Supports addition of new device classes
- Supports addition of new monitoring parameters

System Requirements

- At least Intel® P4 PC/laptop 1 GB RAM having 1280x864 screen resolution
- Internet Explorer® 9 or above/Mozilla® Firefox® 22 or above/Google Chrome™ 28 or above
- Adobe® Flash® Player 11
- For other pre-requisite software, please refer technical documentation or contact Thinxstream Support

¹ Requires Thinxstream Professional Services

² Based on Thinxstream license

**For further information on DeviceMaestro Smart
please visit: www.devicemaestro.com**

Thinxstream Technologies Pte. Ltd.

Ph: +65 65799710

Email: info@thinxstream.com

Copyright© 2013, Thinxstream Technologies Pte. Ltd. All rights reserved. The information in this publication is subject to change. Specification and price change privileges reserved. For the most up-to-date information, please visit our website. Thinxstream and DeviceMaestro are registered trademarks, and DeviceMaestro Smart is a trademark of Thinxstream Technologies Pte. Ltd. Intel is a registered trademark of Intel Corporation. Adobe and Adobe Flash are registered trademarks of Adobe Systems Inc. Chrome is a trademark of Google Inc. Internet Explorer is a registered trademark of Microsoft Corporation. Mozilla and Firefox are registered trademarks of Mozilla Corporation. All other trademarks are the property of their respective owners.